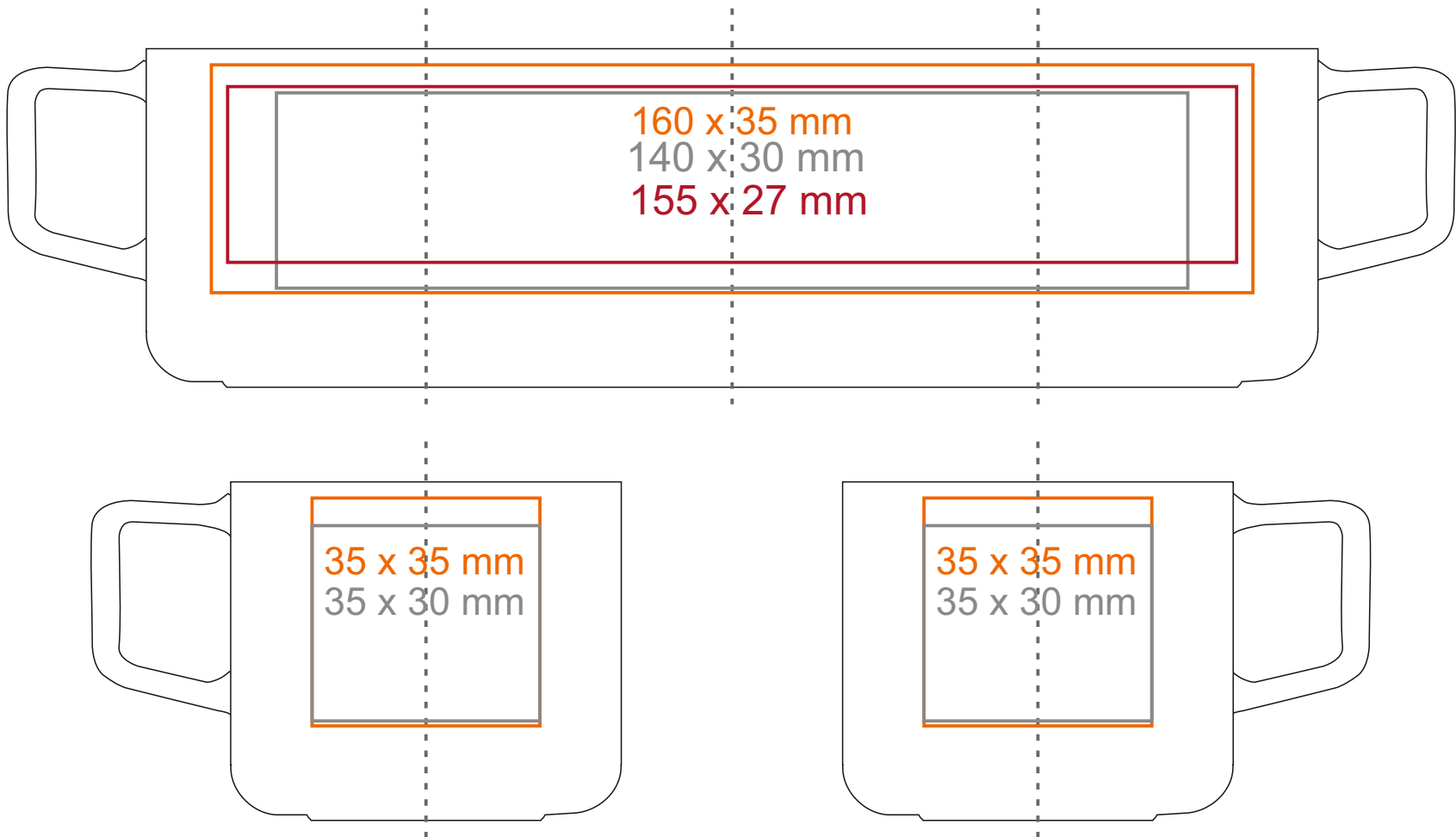


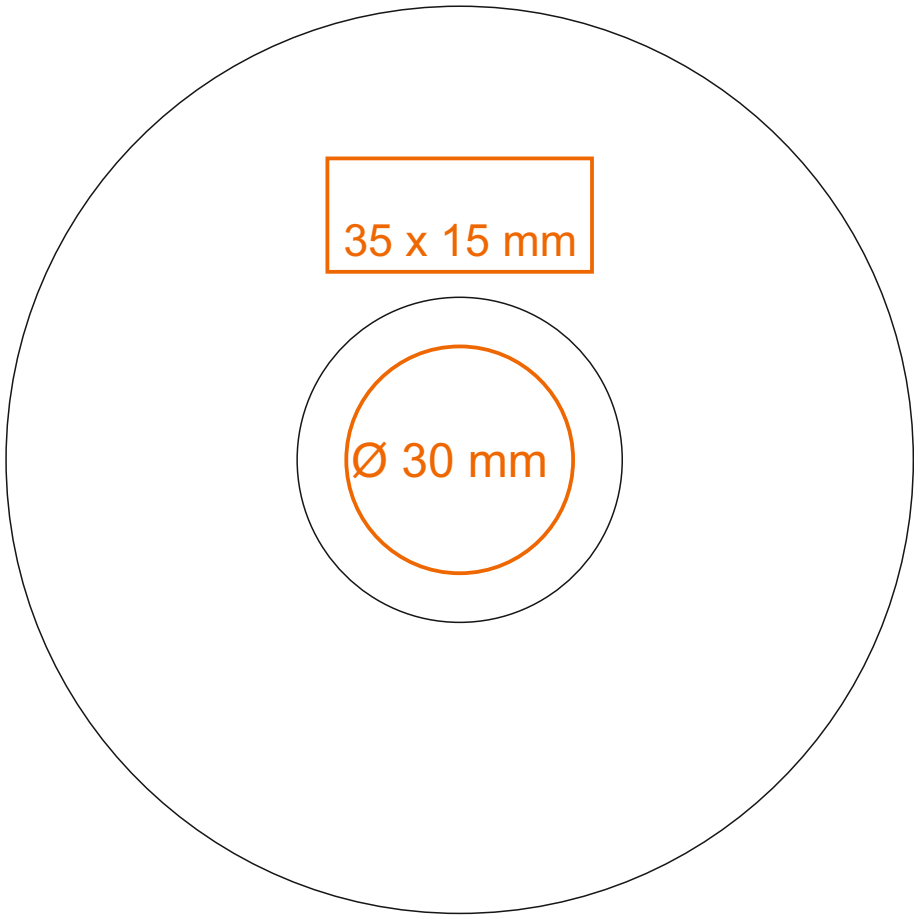
C\_243

Horizon Set

80 ml / h: 52 mm / Ø 60 mm



Saucer Ø 120 mm



- Imprint on the handle
- Imprint on the inside
- Imprint on the bottom outside
- 15 x 9 mm

- 35 x 15 mm

- Ø 30 mm

\*In the case of projects for transfer print running outside of the standard print area, please contact our sales department.

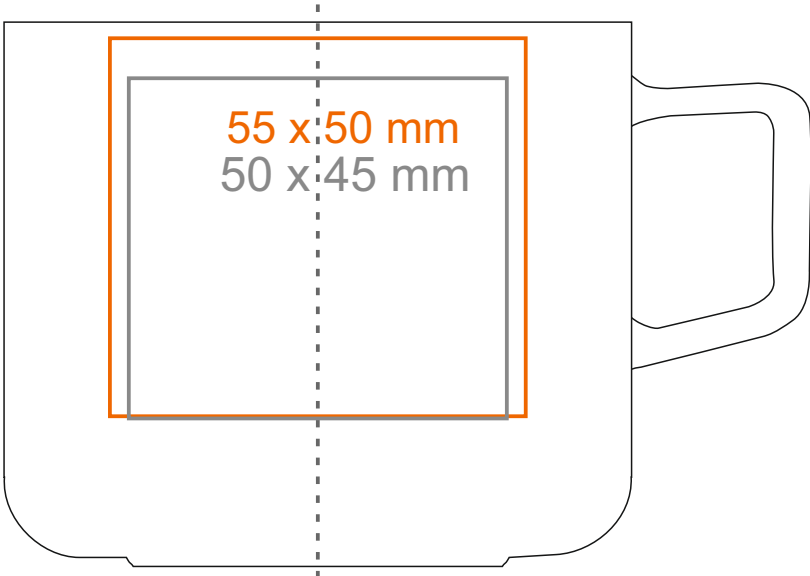
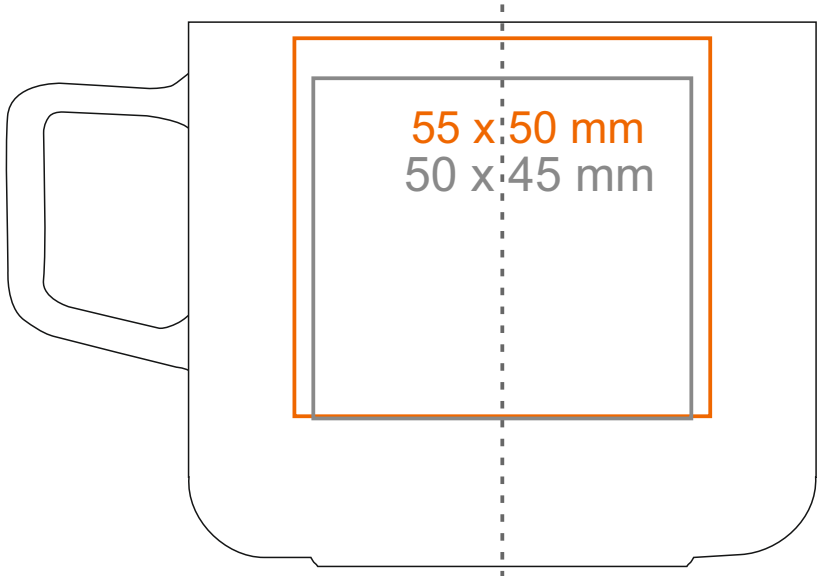
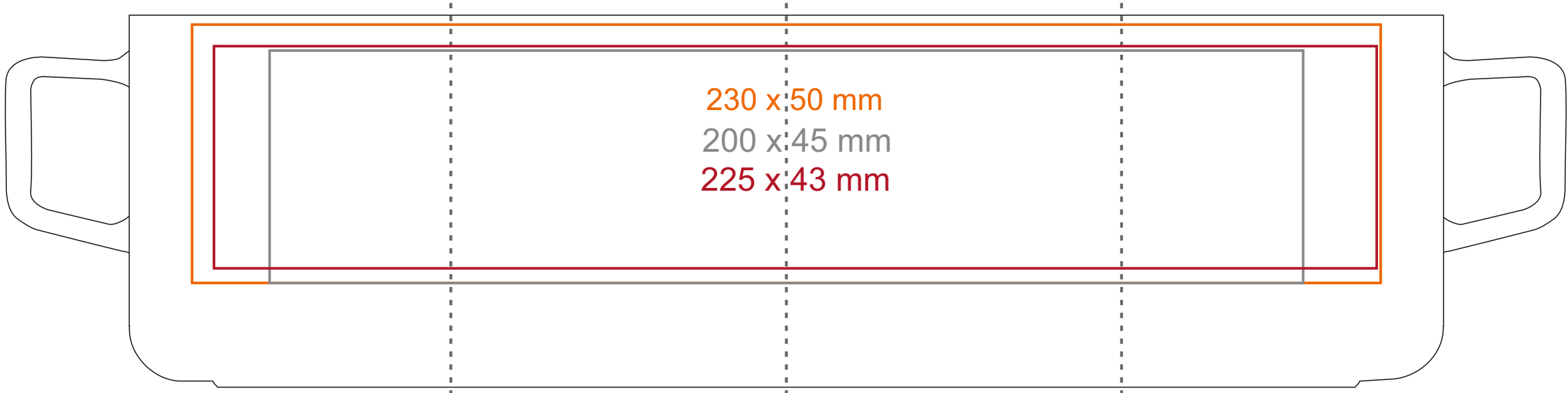
[How to prepare print material](#)

meaning

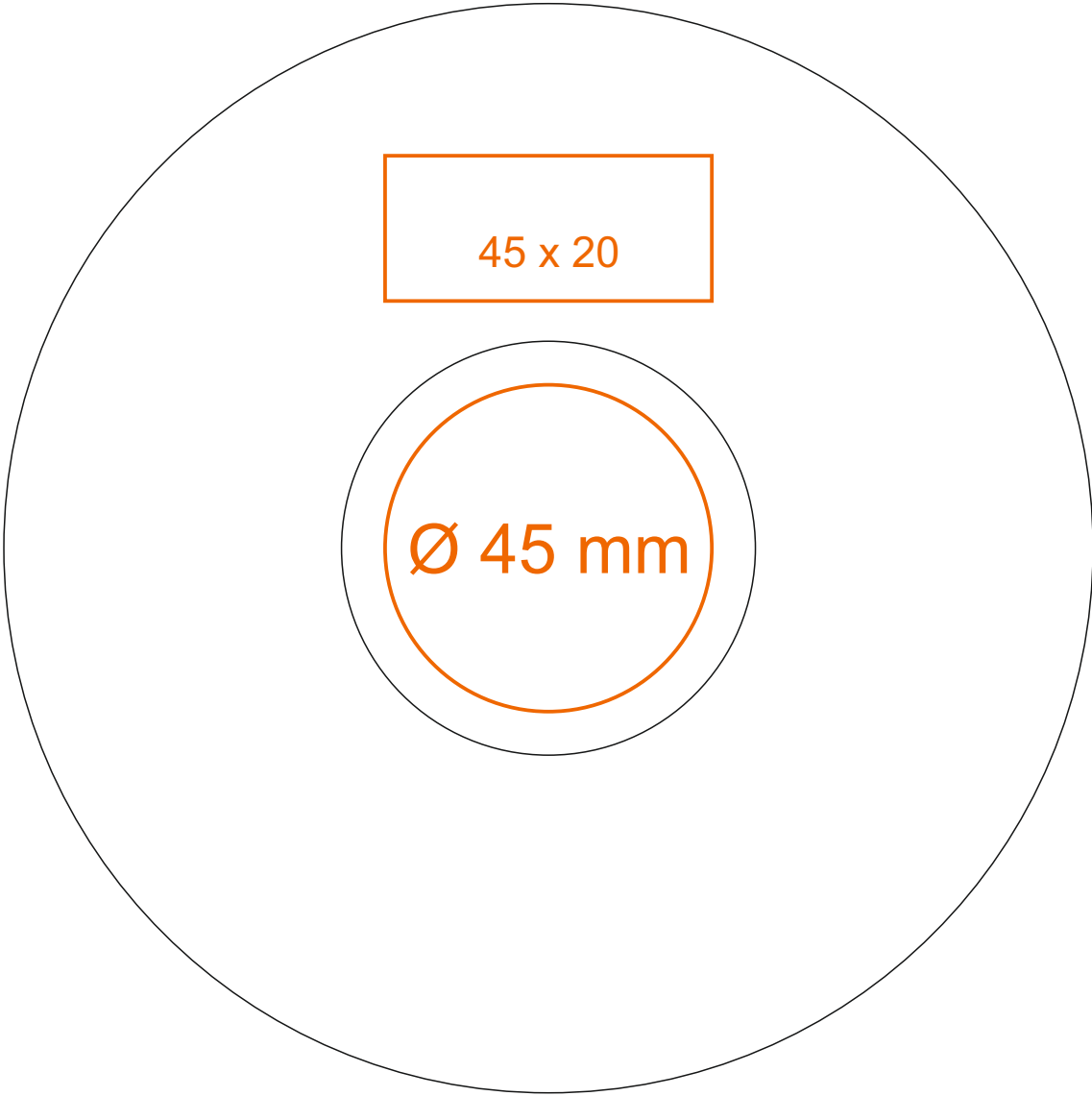
- Transfer Print
- Sensitive Touch
- Direct Print
- Flex Sublimation

C\_243 **Horizon Set**

240 ml / h: 72 mm / Ø 83 mm



Saucer Ø 150 mm



Imprint on the handle  
Imprint on the inside  
Imprint on the bottom inside  
Imprint on the bottom outside

- 20 x 10 mm
- 45 x 20 mm
- Ø 50 mm
- Ø 20 mm

\*In the case of projects for transfer print running outside of the standard print area, please contact our sales department.

[How to prepare print material](#)

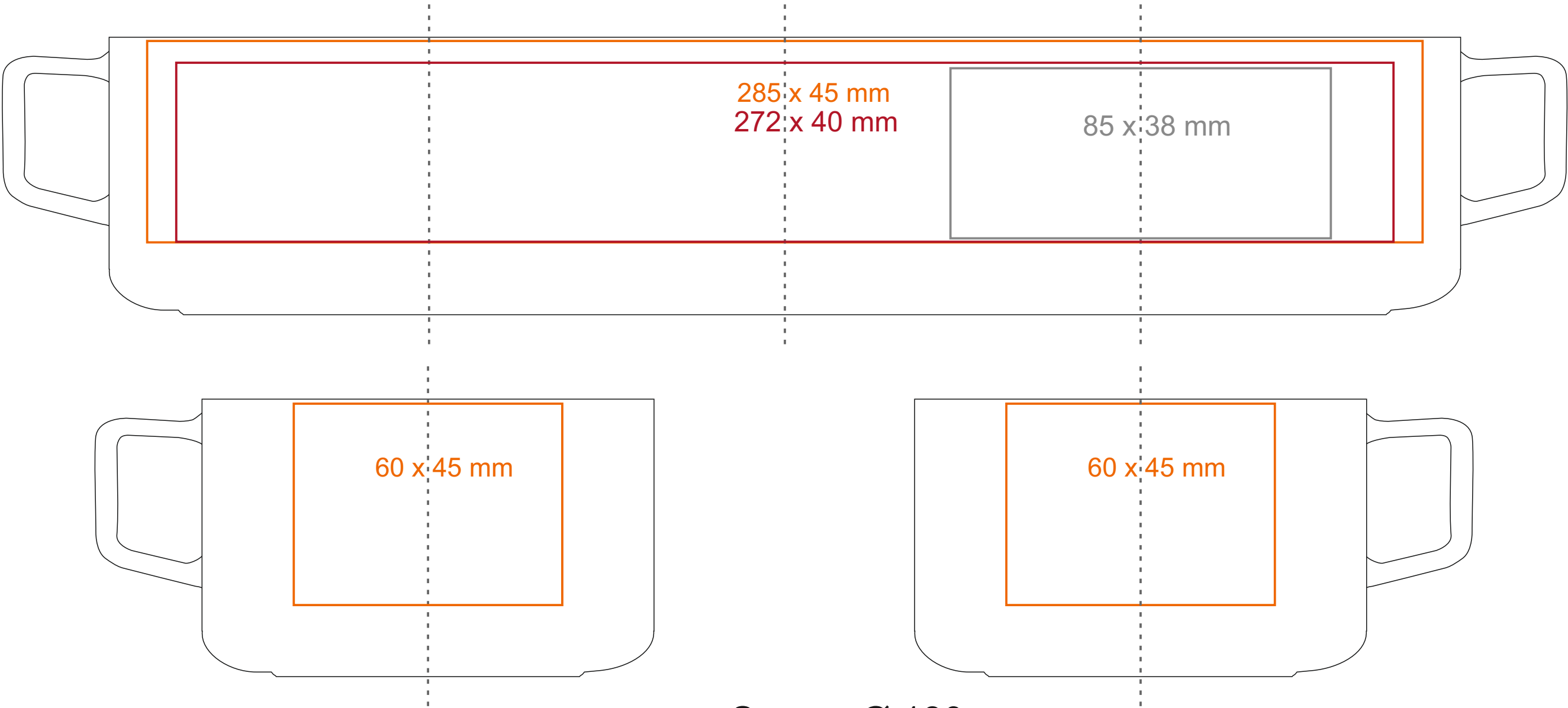
meaning

- Transfer Print
- Sensitive Touch
- Direct Print
- Flex Sublimation

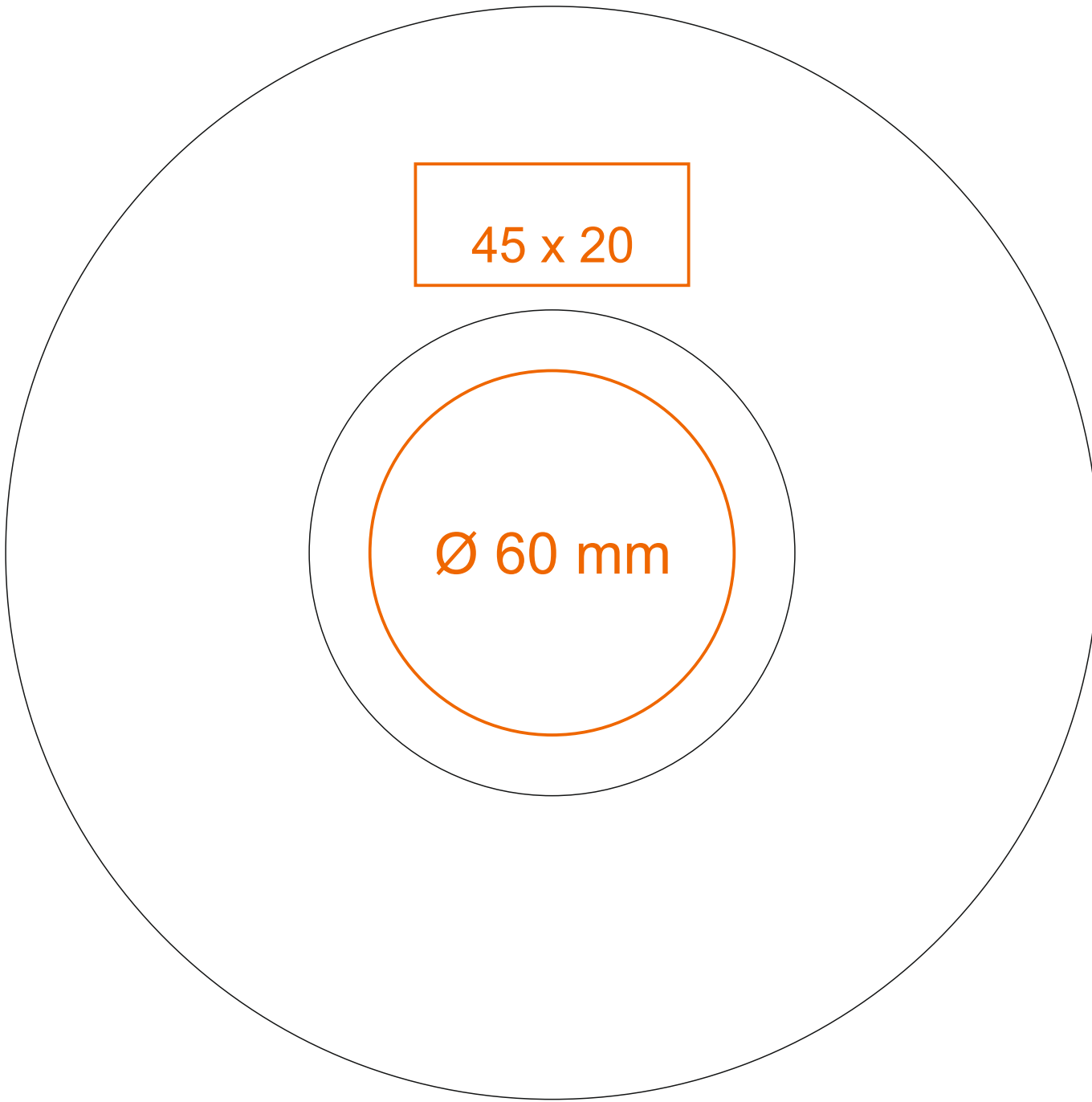
C\_243

Horizon Set

280 ml / h: 62 mm / Ø 101 mm



Saucer Ø 180 mm



Imprint on the handle  
Imprint on the inside  
Imprint on the bottom inside  
Imprint on the bottom outside

- 20 x 10 mm
- 50 x 20 mm
- Ø 60 mm
- Ø 35 mm

\*In the case of projects for transfer print running outside of the standard print area, please contact our sales department.

[How to prepare print material](#)

meaning

- Transfer Print
- Sensitive Touch
- Direct Print
- Flex Sublimation